

Data and the Forensic Life Cycle

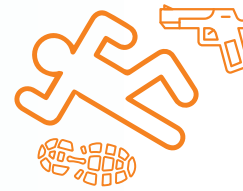
Case and evidentiary data flows throughout the forensic life cycle, serving the needs of all organizations involved.

What if there was a modern, single, end-to-end platform to navigate all that information?

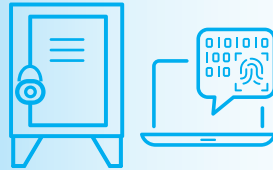
1.

CRIME SCENE

Our data journey begins here – with a crime. From DNA samples and phone records to law enforcement interviews, chain-of-custody, and more, all relevant data must be collected, entered in real time, and managed as the case develops.



2.



PROPERTY MANAGEMENT

Evidence is maintained in a controlled environment, with monitored access to protect the chain of custody. Disposition requests, evidence viewings, and more must be tracked.

3.

LAB ANALYSIS

Forensic laboratory examiners – in a variety of specialties – analyze the evidence, compare it against known databases (ie., CODIS, AFIS, NIBIN) and other case-related information, and report their findings. They need quality assurance features to support ISO 17025 compliance.



4.



MEDICAL EXAMINER

Medical examiners and forensic pathologists add to the data volume with their examinations of human remains and findings on cause of death.

5.

INVESTIGATION

Investigative leads generate all sorts of records: detective notes, witness statements, social media accounts, and more. This data becomes part of the forensic record.



6.



LEGAL

The data that started with a crime flows all the way through to legal proceedings. Is there enough evidence to charge a suspect? Does the evidence support conviction or exonerate a person of interest? Attorneys and other legal personnel need access to status updates and reports.

FORENSIC INTELLIGENCE ENHANCED BY AI



Capture all the data, from all the sources; share it via a secure portal; and analyze it with available AI. Bring true forensic intelligence to your investigations with one platform – **LabVantage Forensic Navigator™**.

Rapid resolution to the case, and confidence in the result.

 LabVantage®

LabVantage.com/forensic

Quality Compliance

“ LabVantage Forensic Navigator would have been a huge help when I was a front-line forensic scientist.”

– Robin MacDonald, PhD
Senior Product Specialist,
LabVantage Solutions



SCAN
TO WATCH
VIDEO



Introducing LabVantage Forensic Navigator™

Go beyond LIMS to meet critical forensic quality assurance requirements.

LabVantage Solutions, Inc., the leading provider of laboratory informatics solutions and services, announces the introduction of LabVantage Forensic Navigator™, a purpose-built forensic information management system that seamlessly manages the vast amounts of forensic evidence and other data used in the criminal justice system.

Forensic Navigator handles data flows in real time, from evidence gathered at the crime scene through the ultimate resolution of an investigation. It accelerates the investigative process by streamlining, connecting, and analyzing all aspects of a criminal case, including evidence collection, property management, forensic lab analyses, medical examiner reports, investigative activities, and legal proceedings. In addition to ensuring quality management, it features artificial intelligence capabilities that help users gain insight from the data generated over the course of the investigation.

LabVantage became ISO 9001:2015 certified in 2016 for the design, installation, and provision of laboratory software and helps ensure compliance with ISO 17025 regulations. LabVantage is a great asset to meet the ISO 17025:2017 requirements that can be controlled via software.

More specifically, LabVantage bolsters compliance via the following specific constraints that are available in the Forensic Navigator:

- **Strict chain of custody** throughout the evidence life cycle, allowing person-to-person transfers as well as storage and ownership by controlled areas;
- **Disallowing assignment** of an examination (to evidence) to which the examiner is not certified;
- **Disallowing assignment** of any standard or reagent (to any examination) if the material is not documented to be within QC requirements;
- **Disallowing assignment** of an instrument (to a run) if the instrument is not documented to be maintained and calibrated.

KEY ADVANTAGES OF LABVANTAGE FORENSIC NAVIGATOR:

- **Quality assurance constraints** Disallows non-certified, non-QC compliant instruments, materials, or examiners from the examination process.
- **Advanced technology** HTML5, advanced predictive analytics via forensic intelligence.
- **Browser-based** Cloud hosted, SaaS or on-premise formats.
- **Configurable** With industry best practices, including data integrity and cybersecurity protection.
- **Online portal** For evidence pre-log, exam requests, status updates, released reports.
- **Dashboards** View all key performance indicators at a glance.
- **Instruments** Integration and interface with most networkable instruments.
- **Collaboration** Enables rapid access to shared data. Duplicative entry never needed.
- **Chain of custody** Includes person-to-person and person-to-secure-location transfers, with reporting options.
- **Case management** Facilitates organizing all aspects of the case.
- **Crime scene** Upload images and videos, capture scene-processing activities and generate reports.
- **Property management** Easily locate evidence and manage disposition activities.
- **Medical examiner** Document external and autopsy observations, track next-of-kin, capture interviews.
- **Laboratory** Track evidence through intake, examination assignment, testing, and reporting.
- **Electronic Lab Notebook** Tracking support throughout the entire analytical life cycle.
- **SDMS** Collect and secure files maintained throughout the lab with full traceability and search functions.
- **Reagents** Manage reagents, standards, and other laboratory consumables.
- **Forensic intelligence** Pool siloed data for rapid resolution of cases and confidence in results.

Go beyond the lab. Learn about Forensic Navigator at [LabVantage.com/forensic](https://www.labvantage.com/forensic)